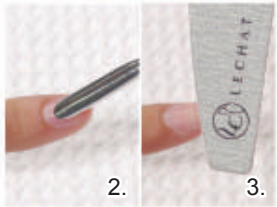


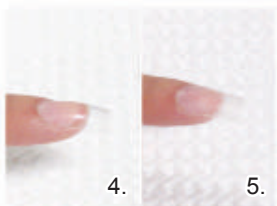
Using Perception™ Gel With Powder Gel®



1. Clean hand with LeChat Gel Cleanser nail Preparation Solution.



2. Gently push back cuticles & remove pterygium



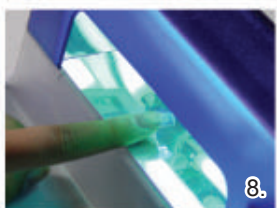
3. Remove shine on natural nail bed with Le Chat 180 grit zebra file.



4. Apply Deco™ clear tip and cut to desired length. (for sculptured nail refer to perception w/nail art)



5. Lightly remove shine on clear tip. (don't spray Gel Cleanser directly to clear tip as it may shatter)



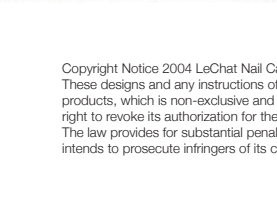
6. (Optional) If needed, apply Le Chat gel primer to natural nail bed only. Let dry to chalky-white.



7. Apply Perception™ color gel from stress area to free edge. (if necessary touch up smile line using clean gel brush, slightly dampened with gel cleanser)



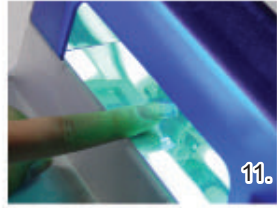
8. Cure under U.V. lamp for 10-15 seconds



9. Using Le Chat gel base, brush from cuticle to stress area as if to polish nail. Be sure to go completely around both side walls.



10. Sprinkle Le Chat Powder Gel® evenly onto nail bed. Make sure to cover both side walls as well. (use either Clear, Iced™ or Stardust™.)



11. Cure for 2 minutes. (If necessary after removing from U.V. lamp, you may apply more Gel Base and Powder Gel® for more leveling or to build a high point then cure again for an additional 2 minutes.)



12. File and shape nail to insure even surface. Make sure around cuticle area is cleaned and tapered down.



13. Buff entire nail to smooth.



14. Brush off any excess dust with nylon brush.



15. Saturate lint free wipe with Gel Cleanser to clean surface of nail only. (do not spray directly on nail)



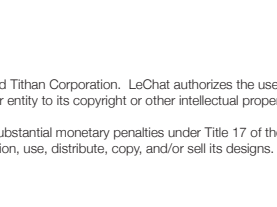
16. Apply 1 layer of Le Chat Gel Top. Make sure to cover all around nail including capping the free edge. (do not use excess Gel Top)



17. Cure for 10 to 15 seconds. To insure smooth surface, apply 2nd thin layer of Gel Top then cure for 2 minutes



18. Saturate lint free wipe with Gel Cleanser and wipe off tacky residue.



19. Apply Cuticle oil treatment.



Products used

